

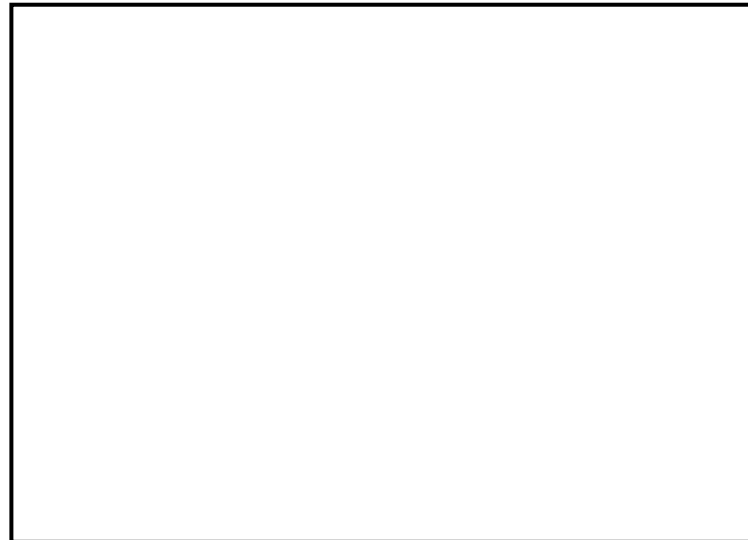
Appendix I: Quantified Risk Assessment



@RISK Output Report for TOTAL / Total Impact

Performed By: Amin, Amar

Date: 17 April 2013 18:08:44

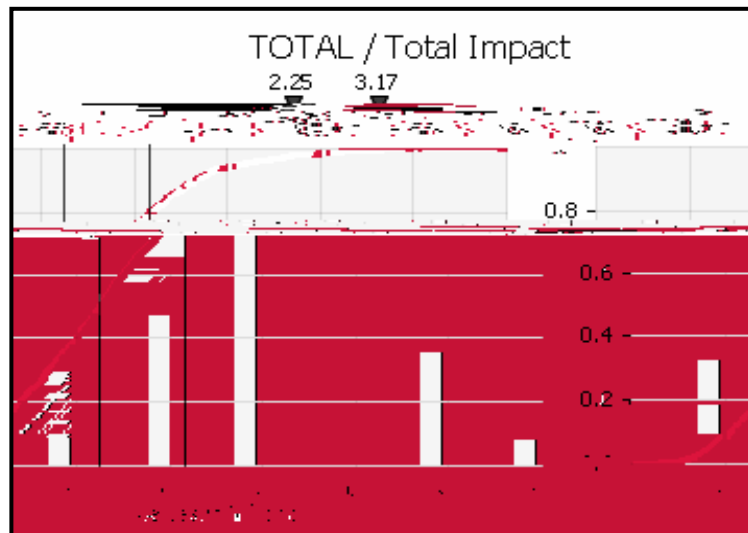


Simulation Summary Information

Workbook Name	B11 Management Case - Risk Register.
Number of Simulations	1
Number of Iterations	1000
Number of Inputs	106
Number of Outputs	1
Sampling Type	Latin Hypercube
Simulation Start Time	4/17/13 18:08:33
Simulation Duration	00:00:02
Random # Generator	Mersenne Twister
Random Seed	1090391986

Summary Statistics for TOTAL / Total Impact

Statistics	Value	Percentile	Value
Minimum	£201,680.09	5%	£846,399.73
Maximum	£6,120,702.48	10%	£1,071,620.02
Mean	£2,328,198.89	15%	£1,244,960.44
Std Dev	£1,019,074.03	20%	£1,401,930.67
Variance	1.03851E+12	25%	£1,580,494.46
Skewness	0.565427854	30%	£1,712,455.39
Kurtosis	3.275852495	35%	£1,839,966.57
Median	£2,253,872.15	40%	£2,007,450.79
Mode	£1,623,579.16	45%	£2,129,558.22
Left X	£2,253,872.15	50%	£2,253,872.15
Left P	50%	55%	£2,365,197.72
Right X	£3,168,348.02	60%	£2,504,218.47
Right P	80%	65%	£2,628,638.91
Diff X	£914,475.87	70%	£2,812,905.81
Diff P	30%	75%	£2,987,935.32
#Errors	0	80%	£3,168,348.02
Filter Min	Off	85%	£3,366,543.52
Filter Max	Off	90%	£3,641,277.72
#Filtered	0	95%	£4,122,666.57



Regression and Rank Information for TOTAL / Total Impact

Rank	Name	Regr	Corr
1	Delay in award of grant funding from DfT.	0.395	0.378
2	The construction of the physical assets is not completed on time and to specification.	0.353	0.365
3	Uncertainty of the value of cycle infrastructure upgrades at the end of scheme development.	0.323	0.313
4	Discovery of unknown utility structures e.g. pipework after on site works commence.	0.304	0.292
5	The construction of the physical assets is not completed to budget.	0.302	0.250
6	The construction of the physical assets is not completed to Cycle City Ambition Grant budget.	0.294	0.314
7	Failure to claim DfT capital funding by 31st March 2015.	0.251	0.278
8	Project costs are underestimated.	0.113	0.149
9	Failure to gain internal approval for spend.	0.113	0.111
10	Delay in award of grant funding from DfT.	0.105	0.066
11	Failure to gain internal approval for spend.	0.103	0.024
12	Poor contractor performance and / or contractor becomes insolvent within the contract period.	0.102	0.126
13	Objections from local communities regarding the proposed scheme, especially where there are proposed changes to TRC	0.097	0.080
14	Suppliers submit financial claims against the Authority	0.090	0.101

